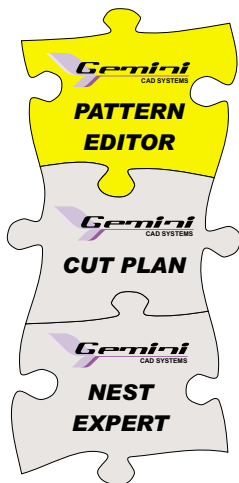


GEMINI PATTERN EDITOR

Easy design, digitize, grade, verify and print your perfect patterns



- Quick and accurate pattern design, using basic design tools and advanced geometrical procedures
- Advanced model design and make-up with simulation for darts, folds, etc
- Automatic and manual pattern grading
- Pattern checking and verifying, measurement table, real time watcher
- Pattern digitising, support for fast access digitising functions, vocal confirmation
- Editor for technical documentation, including support for graphical add-ons
- Direct converters from Lecta, Gerber, Asyst and also DXF-AAMA format.

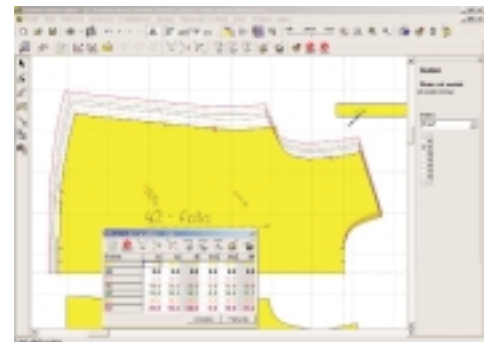
When you design your own products or collections, Gemini Pattern Editor is the software environment in which the designer's ideas are easily transformed into perfectly built and checked pattern projects.

Gifted with unique design functions like reversible folds and darts, automatic & interactive seam allowance creation, automatic notch translation and the all-sizes dimension watcher, GEMINI systems allows a quick and perfect pattern design.

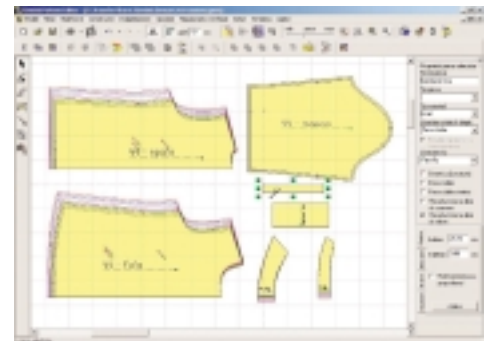
Automatic grading and the interactive grading functions allows the previous experience to be stored in grading rules and easily applied to the new products. Gemini Pattern Editor is based on Bezier curves, but can also handle complex polylines or B-Spline Curves.

The GPE's interface has a very different approach compared to other CAD applications, because is built to be extremely user friendly, according to the latest software standards.

GPE comes as standards with a built-in convertor for Gerber, Assyst and Lectra native files and also for DXF-AAMA import and export.



Gemini Pattern Editor - GRADING Tool



Gemini Pattern Editor - PIECE Tool



Gemini Pattern Editor - product technical sheet

**YOU WANT TO TEST
THIS SOFTWARE ?**

**Visit our website
www.geminiCAD.com
for free download**



Gemini CAD Systems
web: www.geminiCAD.com
e-mail: sales@geminiCAD.com
Phone Fax: +40 (0) 232 237 546
Iasi - Romania, 700490
Mihail Sadoveanu, no. 27

