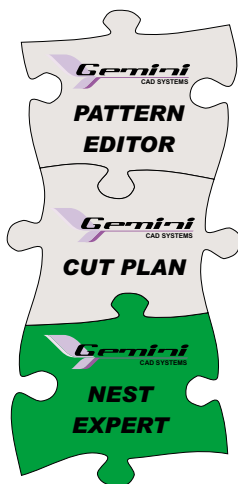
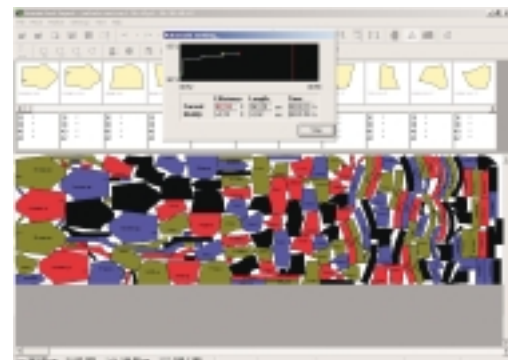


GEMINI NEST EXPERT

A breakthrough in automatic nesting



- Full automatic, high efficiency marker optimisation
- Special features for markers on fabrics with lines or stripes, tubular or folded fabrics, for fuzing-block definition, for fabric contraction
- Over-night marker optimisation for large volume of work
- Fully compatible with markers from Gerber, Lectra and Assyst
- Fully compatible with all types of plotters and cutting machines from Gerber, Lectra, Assyst and others



Gemini Nest Expert - full automatic marker optimisation

Gemini Nest Expert is an advanced solution for automatic nesting in apparel industry, developed by Gemini CAD System, but also available for users that work on other CAD products (direct convertor from Lectra, Assyst, Gerber and also from all applications compatible with DXF - AAMA standard format).

Gemini Nest Expert is based on state of the art technology and algorithms that will provide excellent nesting results in record time. It can run full automatic nesting for one individual marker or work continuously for a list of markers, with no human intervention required. The usual time needed for an average marker of 8 m is about 3-5 minutes. The average results in terms of speed and efficiency are considerably higher than manual nesting.

Gemini Nest Expert can perform full automatic nesting on simple, folded or tubular fabrics, with or without plaids, stripes or textures, with specific widths and contractions, according to each piece specifications and freedom.

Gemini Nest Expert can output the nesting results in its own file format *.pt or *.mrk, but can also export in all major industry standards: DFX-AAMA, HPGL-PLT, ISO-CUT and RS274D. After automatic nesting, the markers can be directly plotted or send to automatic cutting machine.



Gemini Nesting Station - one station can perform up to 200 markers/day

YOU WANT TO TEST THIS SOFTWARE ?

**Visit our website
www.geminiCAD.com
for free download**



Gemini CAD Systems
web: www.geminiCAD.com
e-mail: sales@geminiCAD.com
Phone Fax: +40 (0) 232 237 546
Iasi - Romania, 700490
Mihail Sadoveanu, no. 27

